

2022 Automation & Robotics Showcase



Take your turn at programming a collaborative robot and see for yourself why the next generations of your employees pick it up so fast!

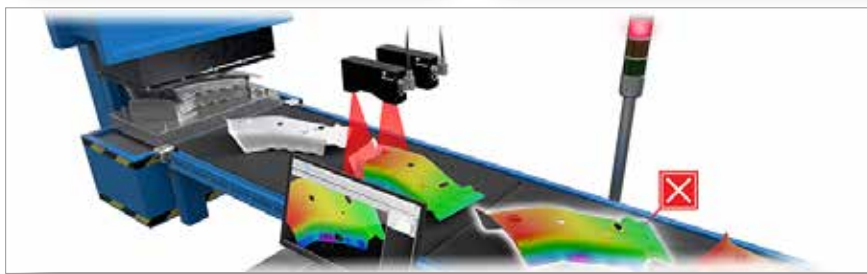
Event held at:
HERZIG Engineering
8201 NW 97th Terr
Kansas City, MO 64153

Event Hours:
September 22nd, 2022
8:45am to 2:30pm



LUNCH 11:30 - 1:00

DYNAMIC ROBOT, VISION, & AUTOMATION EXHIBITS



brought to you by:



800-444-4831
www.hteautomation.com



PDH QUALIFIED SEMINARS*

- **9:00 –Universal Robots - The LABOR CRISIS and Project Management**

The Labor Crisis and Project Execution - Join Universal Robots for this informative discussion on the current labor crisis, the drivers behind collaborative robot deployments, and how best to tackle your cobot project.

We will discuss the key things to consider when choosing whether to deploy a cobot on your own, with the help of a value-add distributor, or through a systems integrator, whether that be a lean integrator or more of a traditional integrator.



- **10:00 –Herzig Engineering - Electrical Safety Isn't Automatic**

OSHA produced an Instruction called "Guidelines For Robotics Safety" back in 1987. Automation has evolved over the years and so have the safety standards surrounding the equipment. It is important to understand the past, recognize the present, and plan for the future of electrical safety for your automation equipment.



- **11:00 –Balluff - Enabling Smart Factory w/Condition Monitoring, + IIOT trends**

Smart Factory, Condition Monitoring and IIOT. Real-life examples with justification for why manufacturers are investing in these topics. Obtain methods to meet these technology trends to help you build better machines or upgrade your current machines for the modern era and beyond.



- **12:00 –Mitsubishi Electric - Innovations in Servo/Motion Control**

Create new value with the MELSERVO-J5. Learn how to: Maximize Energy Conservation, Servo Motor Performance, Scalability, Accuracy, Tuning, and Trouble Shooting/Maintenance. Unlock performance with a total drive solution.



- **1:00 –LMI Technologies - 3D Inspection Solutions by Industry**

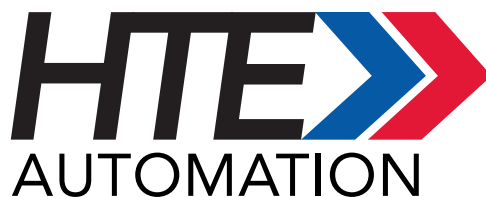
LMI designs smart, all-in-one 3D laser sensors and 3D laser scanners for 100% 3D quality control and material optimization for industrial applications. Seminar will cover applications common to a variety of industries, including Food, Automotive, Electronics, Packaging, Rubber & Tire, Wood, and more.



* All seminars will qualify for Engineering PDH credit in both Kansas and Missouri. Earn up to 5 in one day.

For 63 years HTE Technologies has served communities in Kansas, Missouri, and Illinois, working with local manufacturers to:

- Accelerate production
- Lower operating costs
- Enhance product quality
- Raise overall equipment effectiveness



a business unit of HTE Technologies

800-444-4831

www.hteautomation.com

KANSAS CITY, MO
913.440.4477

SPRINGFIELD, MO
417.724.2231

ST. LOUIS, MO
314-731-4444

BLOOMINGTON, IL
217.615.4440